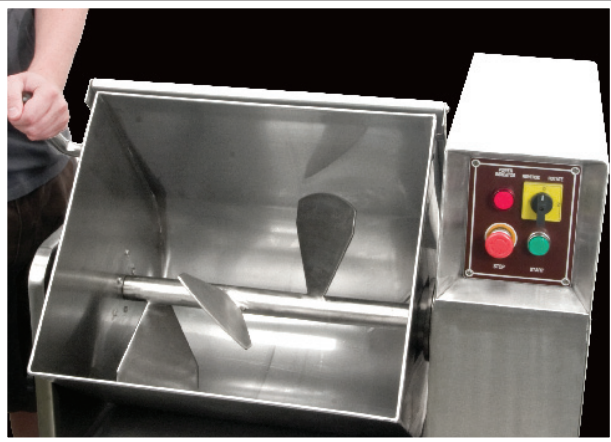




TSM PRODUCTS

a division of The Sausage Maker, Inc.



Commercial Meat Mixer Manual : 110 & 220 Lb. Capacity



Model #44145

110 Lb. Capacity

- Dimensions:
32"W x 19-1/2"D x 40"H
- Power: 110V/60Hz
- Output: 1.5 HP
- Net Wt: 305 lbs

Model #44146

220 Lb. Capacity

- Dimensions:
39"W x 22"D x 43"H
- Power: 220V ~ 240V / 50Hz
- Output: 2 HP
- Net Wt: 497 lbs

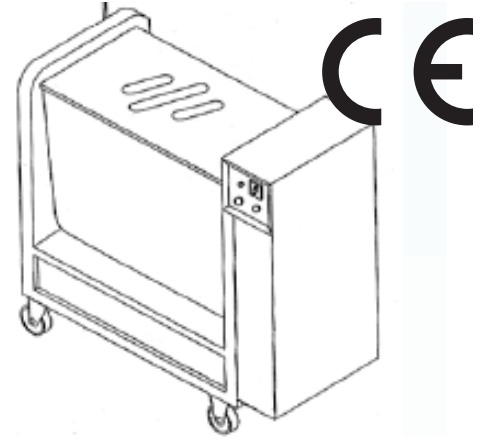


TSM PRODUCTS

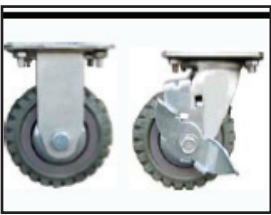
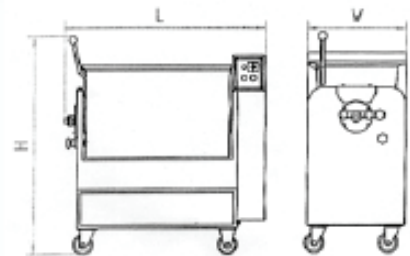
a division of The Sausage Maker, Inc.

Commercial Meat Mixer Manual : 110 & 220 Lb. Capacity

Model Number	#44145	#44146
Production Capacity	110 Lb. Capacity	220 Lb. Capacity
Voltage	110V/60Hz	220V ~ 240V / 50Hz
Output	1.5 HP	2 HP
Dimensions	32"L x 19-1/2"W x 40"H	39"L x 22"W x 43"H
Net Weight	Net Wt: 305 lbs	Net Wt: 497 lbs



Built for mixing large quantities of meat and food products, the (4) four rotating blades easily blend in your ingredients to a thoroughly mixed end-product. Mixers are equipped with a Rotate, Reverse and OFF function. Several safety mechanisms ensure efficient mixing without endangering the operator. The cover must remain closed during mixing but, (3) three openings allow for introduction of ingredients into mixer during operation. The mixing tub is capable of tilting 90° for easy unloading and cleaning.



Operation and Maintenance:

- 1) Before use, check that power supply corresponds to that required by the mixer, also be sure mixer is properly grounded.
- 2) Run the machine without load before use. There should be proper space between bowl and the paddles (no contact).
- 3) The paddles rotate or reverse in the bowl controlled by the switch.
- 4) Pour stuffing into bowl and place the cover on top of bowl, then run mixer.
- 5) When finished, shut OFF power, remove pin to set and rotate bowl for mixed stuffing to be easily removed.
- 6) There are 2 straight and two locking casters.

DO NOT use this mixer for dough mixing, it may cause damage.

Cleaning should be done with damp towels and not with water alone.

This Mixer is equipped with a electromotor protection device which shuts off power when it is overloaded or encounters strong resistance. This can be avoided by keeping unit clean of obstruction and not overloading with heavy material.